





## 2000W PURE SINE WAVE DC TO AC POWER INVERTER

Model	SK2000U -121	SK2000U -122	SK2000U -241	SK2000U -242	SK2000U -481	SK2000U -482
Rated power	2000W					
Surge power	6000W(Few seconds)					
Output voltage	110V	230V	110V	230V	110V	230V
Remote function	Default					
No load current draw	≤0.6A					
Output waveform	Pure Sine Wave 					
USB port	5V 1A					
Remote controller	Optional					
LED indicator	A. input level: < 20% →off, between 20% and 50% →green, < 90% →orange, > 90% →red B. status: power on →green, protection/failure →red					
Protection function	S4 →frequency 50/60Hz, S3 →15% load, S2 →10% load, S1 →5% load					
Protection function	Bat. low voltage alarm & shut down, over temperature, over voltage, short circuit, reverse polarity, earth leakage, overload.					
Input voltage	12V		24V		48V	
Replaceable fuse	30A × 8		15A × 8		7.5A × 8	
Cooling fan	By load control / temp. control					
Dimension	36.5 × 25.1 × 10.5cm (L × W × H)					
N.W./Unit	5200g					
QTY/Ctn	2pcs					
Meas./Ctn	40 × 31.5 × 38cm					
Packing	Gift box					
Certification	CE-EMC/LVD RoHS E-mark					

## 3000W MODIFIED SINE WAVE DC TO AC POWER INVERTER

Model	SK3000U -121	SK3000U -122	SK3000U -241	SK3000U -242	SK3000 -481	SK3000 -482
Rated power	3000W					
Surge power	9000W(Few seconds)					
Output voltage	110V	230V	110V	230V	110V	230V
Remote function	Default					
No load current draw	≤0.8A					
Output waveform	Pure Sine Wave 					
USB port	5V 1A					
Remote controller	Optional					
LED indicator	A. input level: < 20% →off, between 20% and 50% →green, < 90% →orange, > 90% →red B. status: power on →green, protection/failure →red					
Protection function	S4 →frequency 50/60Hz, S3 →15% load, S2 →10% load, S1 →5% load					
Protection function	Bat. low voltage alarm & shut down, over temperature, over voltage, short circuit, reverse polarity, earth leakage, overload.					
Input voltage	12V		24V		48V	
Replaceable fuse	30A × 2		15A × 2		7.5A × 2	
Cooling fan	By load control / temp. control					
Dimension	47.5 × 25.1 × 10.5cm (L × W × H)					
N.W./Unit	7500g					
QTY/Ctn	2pcs					
Meas./Ctn	53 × 32 × 40.5cm					
Packing	Gift box					
Certification	CE-EMC/LVD RoHS E-mark					

## 20/25/30A PWM SOLAR CHARGE CONTROLLER

Model	ENS12/24-20	ENS12/24-25	ENS12/24-30
Nominal battery charge voltage	12/24V auto.detection		12/24/48V
Rated charge current	20A	25A	30A
Rated discharge current	20A	25A	30A
Max.PV input power	300W@12V×2/24V	360W@12V×2/24V	450W@12V×2/24V×4/48V
Power conversion efficiency	Max. 90%		
Standby power consumption	≤15mA		
Temperature compensation	-3 mv/cell *K		
Float charge	13.8V; ×2/24V; ×4/48V		
Constant voltage charge	14.6V; ×2/24V; ×4/48V		
Low disconnect voltage	11V; ×2/24V; ×4/48V		
Low reconnect voltage	12.8V; ×2/24V; ×4/48V		
Grounding	Positive grounding		
Battery type	GEL, AGM, Solar battery etc.		
Ambient temperature range	-40 to +50°C		
Case protection	IP22		
Dimension	172*126.3*73mm(L*W*H)		
Net weight	0.35kg	0.35kg	0.36kg



## 40/50/60A PWM SOLAR CHARGE CONTROLLER

Model	ENS12/24-40	ENS12/24-50	ENS12/24-60
	ENS4840	ENS4845	ENS4860
Nominal battery charge voltage	12/24V auto.detection/48V		
Rated charge current	40A	50A	60A
Rated discharge current	40A	50A	60A
Max.PV input power	600W@12V ×2/24V×4/48V	750W@12V ×2/24V×4/48V	900W@12V ×2/24V×4/48V
Power conversion efficiency	Max.90%		
Standby power consumption	≤20mA		
Temperature compensation	-3 mv/cell *K		
Float charge	13.8V; ×2/24V; ×4/48V		
Constant voltage charge	14.6V; ×2/24V; ×4/48V		
Low disconnect voltage	11V; ×2/24V; ×4/48V		
Low reconnect voltage	12.8V; ×2/24V; ×4/48V		
Grounding	Positive grounding		
Battery type	GEL, AGM, Solar battery etc.		
Ambient temperature range	-40 to +50℃		
Case protection	IP22		
Dimension	172*126.3*73mm(L*W*H)		
Net weight	0.4kg	0.4kg	0.45kg



### 20/25/30A PWM SOLAR CHARGE CONTROLLER WITH LCD

Model	ENS12/24-20D	ENS12/24-25D	ENS12/24-30D
	ENS4830D		
Nominal battery charge voltage	12/24V auto.detection		12/24/48V
Rated charge current	20A	25A	30A
Rated discharge current	20A	25A	30A×4/48V
Max.PV input power	300W@12V ×2/24V   360W@12V ×2/24V   450W@12V ×2/24V		
LCD screen display	Battery voltage, PV charge current, Load discharge current, total PV charge Ah, total PV discharge Ah, the setting of constant voltage charging, the setting of low voltage disconnect, the setting of low voltage reconnect		
Buttons	Menu, Load( on/off), Up, Down		
Temperature compensation	-3 mv/cell *K		
Float charge	13.8V; ×2/24V; ×4/48V		
Constant voltage charge	14.6V; ×2/24V; ×4/48V		
Low disconnect voltage	11V; ×2/24V; ×4/48V		
Low reconnect voltage	12.8V; ×2/24V; ×4/48V		
Grounding	Positive grounding		
Battery type	GEL, AGM, Solar battery etc.		
Ambient temperature range	-40 to +50°C		
Case protection	IP22		
Dimension	172*126.3*73mm(L*W*H)		
Net weight	0.45kg	0.45kg	0.5kg

### 40/50/60A PWM SOLAR CHARGE CONTROLLER WITH LCD

Model	ENS12/24-40D	ENS12/24-50D	ENS12/24-60D
	ENS4840D	ENS4850D	ENS4860D
Nominal battery charge voltage	12/24V auto.detection/48V		
Rated charge current	40A	50A	60A
Max.discharge current	40A	50A	60A
Max.PV input power	600W@12V ×2/24V×4/48V   750W@12V ×2/24V×4/48V   900W@12V ×2/24V×4/48V		
LCD screen display	Battery voltage, PV charge current, Load discharge current, total PV charge Ah, total PV discharge Ah, the setting of constant voltage charging, the setting of low voltage disconnect, the setting of low voltage reconnect		
Buttons	Menu, Load( on/off), Up, Down		
Temperature compensation	-3 mv/cell *K		
Float charge	13.8V; ×2/24V; ×4/48V		
Constant voltage charge	14.6V; ×2/24V; ×4/48V		
Low disconnect voltage	11V; ×2/24V; ×4/48V		
Low reconnect voltage	12.8V; ×2/24V; ×4/48V		
Grounding	Positive grounding		
Battery type	GEL, AGM, Solar battery etc.		
Ambient temperature range	-40 to +50°C		
Case protection	IP22		
Dimension	172*126.3*73mm(L*W*H)		
Net weight	0.55kg	0.55kg	0.6kg





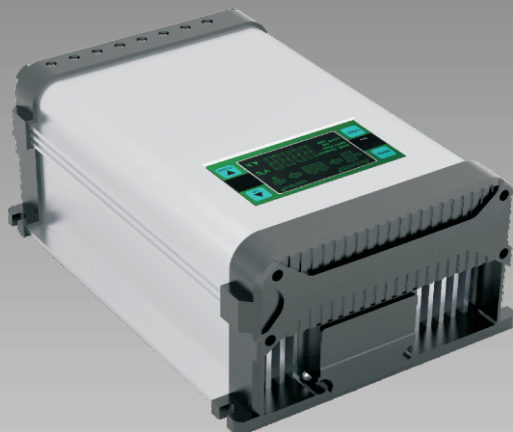
### 80/90/100A PWM SOLAR CHARGE CONTROLLER WITH LCD

Model	ENS12/24-80D	ENS12/24-90D	ENS12/24-100D
	ENS4880D	ENS4890D	ENS48100D
Nominal battery charge voltage	12/24V auto.detection/48V		
Rated charge current	80A	90A	100A
Max.PV input power	1200W@12V ×2/24V× 4/48V	1300W@12V ×2/24V× 4/48V	1500W@12V ×2/24V× 4/48V
LCD screen display	Battery voltage, PV charge current, Load discharge current, total PV charge Ah, total PV discharge Ah, the setting of constantvoltage charging, the setting of low voltage disconnect, the setting of low voltage reconnect		
Buttons	Menu, Load( on/off), Up, Down		
Temperature compensation	-3 mv/cell *K		
Float charge	13.8V; ×2/24V; ×4/48V		
Constant voltage charge	14.6V; ×2/24V; ×4/48V		
Low disconnect voltage	11V; ×2/24V; ×4/48V		
Low reconnect voltage	12.8V; ×2/24V; ×4/48V		
Grounding	Positive grounding		
Battery type	GEL, AGM, Solar battery etc.		
Ambient temperature range	-40 to +50℃		
Case protection	IP22		
Dimension	168 × 176 × 93mm(L*W*H)		
Net weight	1.3kg	1.45kg	1.6kg

### 5/10A SOLAR LIGHT CONTROLLER

Model	SLC12/24-05	SLC12/24-10
Nominal system voltage	12/24V DC auto. work	
Maximum battery voltage	32V	
Rated charge current	5A	10A
Rated discharge current	5A	10A
Charge circuit voltage drop	≤ 0.26V	
Discharge circuit voltage drop	≤ 0.15V	
Self-consumption	≤ 6mA	
NTTV(night time threshold voltage)	12V system: 5V; 24V system: 10V	
DTTV(daytime threshold voltage)	12V system: 6V; 24V system: 12V	
Temperature compensation coefficient(TEMPCO)*	-30Mv/℃/12V( 25℃ ref)	
Working temperature	-35℃ to +55℃	
Storage temperature	-35℃ to +80℃	
Humidity	10%-90% NC	
Case protection	IP30	
Overall dimension	150*82*50mm	
Terminal	6mm <sup>2</sup>	
Net weight	0.35kg	





### Maximum Power Point Tracking (MPPT) controller

Model	MPPT-25A	MPPT-30A	MPPT-40A
Nominal battery charge voltage	12/24V auto.detection		
Rated charge current	25A	30A	40A
Rated discharge current	25A	30A	40A
Max.PV input power	360W@12V ×2/24V	430W@12V ×2/24V	570W@12V ×2/24V
Power conversion efficiency	≥97%		
Standby power consumption	≤15mA		
Temperature compensation	-3 mv/cell *K		
Float charge	13.8V; ×2/24V		
Constant voltage charge	14.6V; ×2/24V		
Low disconnect voltage	11V; ×2/24V		
Low reconnect voltage	12.8V; ×2/24V		
Grounding	Positive grounding		
Battery type	GEL, AGM, Solar battery etc.		
Ambient temperature range	-40 to +50℃		
Case protection	IP22		
Dimension	188 × 176 × 93m(L*W*H)		
Net weight	1.7kg	1.8kg	1.9kg

### MAXIMUM POWER POINT TRACKING (MPPT) CONTROLLER

Model	MPPT-50A	MPPT-60A	MPPT-70A
Nominal battery charge voltage	12/24V auto.detection		
Rated charge current	50A	60A	70A
Rated discharge current	50A	60A	70A
Max.PV input power	720W@12V ×2/24V	860W@12V ×2/24V	1000W@12V ×2/24V
Power conversion efficiency	≥97%		
Standby power consumption	≤10mA		
Temperature compensation	-3 mv/cell *K		
Float charge	13.8V; ×2/24V		
Constant voltage charge	14.6V; ×2/24V		
Low disconnect voltage	11V; ×2/24V		
Low reconnect voltage	12.8V; ×2/24V		
Grounding	Positive grounding		
Battery type	GEL, AGM, Solar battery etc.		
Ambient temperature range	-40 to +50℃		
Case protection	IP22		
Dimension	192 × 176 × 93mm(L*W*H)		
Net weight	2kg	2.1kg	2.2kg

