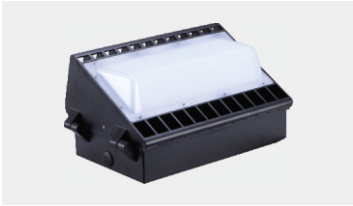


## S226 SERIES From 40W to 150W

### LED TECHNICAL DATA

- Typical Luminous Flu&Efficiency @350mA;
- 130lm@25°C
- Max Junction Temperature:
- 150°C
- Color Temperature:
- 3500K-6500K
- LED life Cycle
- 50,000 hrs.



### ORDER CODE

- TSL- S226- 40W
- TSL-S226- 60W
- TSL-S226-80W
- TSL-S226-100W
- TSL-S226-120W
- TSL-S226-150W

### LUMINAIRE TECHNICAL DATA

- LED light source
- 24pcs XTE CREE (40/60W)
- 36pcs XTE CREE (80W)
- 48pcs XTE CREE (100W)
- 60pcs XTE CREE (120/150W)



- Luminous Flux :
- 40W-3200 lm
- 60W-4800 lm
- 80W-6400 lm
- 100W-8000 lm
- 120W-9600 lm
- 150W-12000 lm
- Housing Material :
- Die Cast Aluminum with durable polyester powder coating & PC Front lens
- Operating Temperature :
- -30°C~+45°C
- Power Driver:
- AC:100~295Vac 50/60Hz
- Classification :
- IP66 Class II
- Wall Junction mounting
- Net Weight:
- 40W/60W: 4.5kg
- 80W/100W: 4.5kg
- 120W/150W: 8kg

### DIMENSIONS

Code	Power	L * W * H(mm)
S226-40	40W	366*266*196
S226-60	60W	366*266*196
S226-80	80W	366*266*196
S226-100	100W	366*266*196
S226-120	120W	366*266*196
S226-150	150W	366*266*196

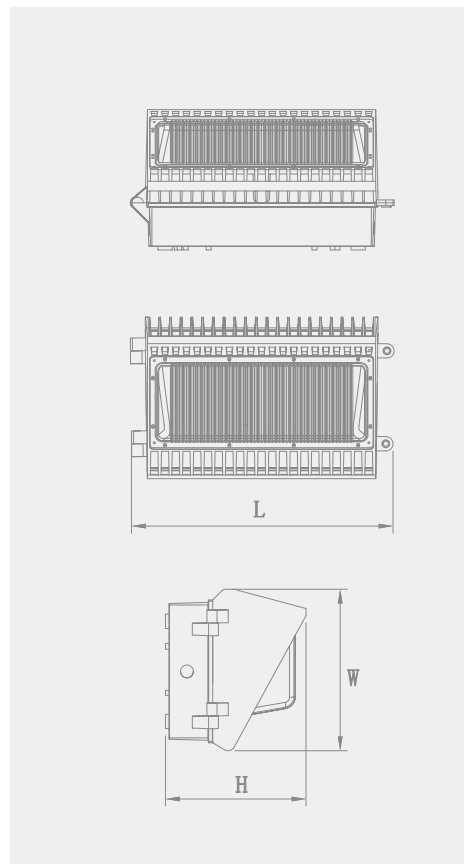
### COMPLIANCE STANDARD

- Driver
- UL/CUL,CE,PSE,EN61347
- Luminaire:
- CE,ROHS,PSE

### APPLICATION

- Exterior building Lighting
- Pedestrain Walkway
- Commercial Lightings

\*Please indicate color temperature when ordering.



Note: Specifications are subject to change without prior notice.

